

CONTINUING MEDICAL EDUCATION

Johns Hopkins School of Medicine
Division of Gastroenterology and Hepatology
present:



REGISTER NOW

Eighth Annual HITEC Hopkins International Therapeutic Endoscopy Course **2024**

September 5-6, 2024

Course Directors:

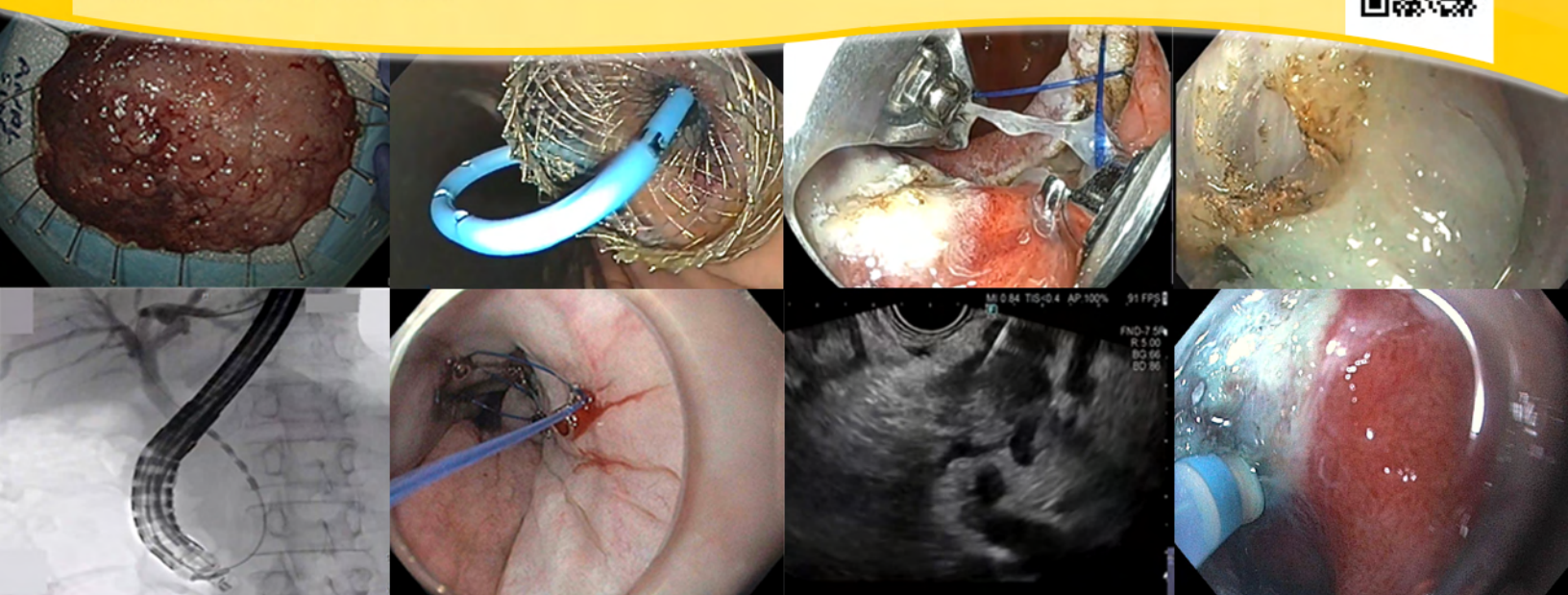
Mouen Khashab, MD, MASGE

Saowanee Ngamruengphong, MD

Mary-Rose Hess, BSN, RN, CGRN

Johns Hopkins School of Medicine
Thomas B. Turner Building
Baltimore, Maryland USA

With main conference lectures
available via live stream!



This activity has been approved for **AMA PRA Category 1 Credits™**.

- Comprehensive **2-day hybrid course** (in-person attendance with an option of virtual participation of lectures and live demonstrations) dedicated to providing practicing gastroenterologists, endoscopists and endoscopy staff state-of-the-art updates on luminal and pancreatico-biliary diseases and endoscopy
- HITEC is the **third-highest attended course in the U.S.** after DDW and ACG
- **Hands-on Training** in advanced endoscopic procedures
- The course is consistently attended by physicians from more than 100 countries
- Two days of **Live Endoscopy** from Johns Hopkins and other centers of excellence around the world with **Live Spanish Translation** and **AI Closed Caption [CC]** available in different languages
- Free registration for world-wide audience
(Additional fees apply when registering for in-person attendance)
- Concurrent **GI nurses and associates' course**
- Course faculty includes the **best educators and leaders** from around the world
- Combination of live endoscopy, short didactic presentations, interactive discussions, and interactive video case presentations

In short, **HITEC 2024** will feature a detailed illustration of the optimal techniques to enhance endoscopic skills for the management of various luminal and pancreatico-biliary diseases, and concurrently introducing advanced and novel procedures/techniques to endoscopists, trainees and endoscopy nurses and technicians from around the world. We look forward to your participation.



ENDORSED BY



WHO SHOULD ATTEND

This activity is intended for Anesthesiology, Gastroenterology, General Surgery, Hepatology, Infectious Diseases, Internal Medicine, Nurse Anesthetist, Nurse Practitioner, Nursing, Nursing Associates and Clinical Technicians.

OBJECTIVES

After attending this activity, the learner will demonstrate the ability to:

- Discuss the latest advances in luminal and pancreaticobiliary endoscopy.
- Discuss the latest advances in bariatric endoscopy.
- Discuss different management options techniques for patients with complex colon polyps.
- Present an update on POEM and other treatment options for patients with achalasia.
- Illustrate techniques and indications for endoscopic suturing.
- Demonstrate latest breakthrough procedures in diagnostic and therapeutic endoscopy.

ACCREDITATION STATEMENT

The Johns Hopkins University School of Medicine is accredited by the Accreditation Council for Continuing Medical Education (ACCME) to provide continuing medical education for physicians.



CREDIT DESIGNATION STATEMENT

The Johns Hopkins University School of Medicine designates this live activity for a maximum of 10.5 *AMA PRA Category 1 Credits*[™]. Physicians should claim only the credit commensurate with the extent of their participation in the activity.

OTHER CREDITS

American Nurses Credentialing Center (ANCC) accepts *AMA PRA Category 1 Credit*[™] from organizations accredited by the ACCME.

American Academy of Nurse Practitioners National Certification Program accepts *AMA PRA Category 1 Credit*[™] from organizations accredited by the ACCME.

American Board of Internal Medicine's (ABIM) Maintenance of Certification (MOC) Program

Successful completion of this CME activity, which includes participation in the evaluation component, enables the participant to earn up to 10.5 MOC in the American Board of Internal Medicine's (ABIM) Maintenance of Certification (MOC) program. Participants will earn MOC points equivalent to the amount of CME credits claimed for the activity. It is the CME activity provider's responsibility to submit participant completion information to ACCME for the purpose of granting ABIM MOC credit.



POLICY ON PRESENTER AND PROVIDER DISCLOSURE

It is the policy of the Johns Hopkins School of Medicine that the presenter and provider globally disclose conflicts of interest. The Johns Hopkins School of Medicine OCME has established policies to identify and mitigate relevant conflicts of interest prior to this educational activity. Detailed disclosure will be made prior to presentation of the education.



HOW TO OBTAIN CREDIT

Post activity, an online evaluation will be available to attendees to evaluate the activity and individual presentations and to identify future educational needs. Upon completion of the evaluation, the learner must attest to the number of hours in attendance. Credits earned will be added to the learner's transcript and immediately available for print. **The last day to access the evaluation and attest to your credits is October 21, 2024.**

An outcome survey will be sent to all physician attendees within two months post activity to assist us in determining what impact this activity had on the learner's practice.

AMERICANS WITH DISABILITIES ACT

The Johns Hopkins School of Medicine fully complies with the legal requirements of the ADA and the rules and regulations thereof. Please notify us if you have any special needs.

ACKNOWLEDGEMENT

Applications for commercial support from health care related industries are pending. A complete list of contributors will be provided in the syllabus. Please note that commercial support received is solely for the educational component of the activity and will not be used to provide food and beverage.

Please note: The Physician Payments Sunshine Act was enacted by Congress to increase public awareness of financial relationships between drug and medical device manufacturers and physicians. In compliance with the requirements of this Act, the commercial supporter/s of this activity may require the Johns Hopkins School of Medicine to report certain professional information (such as name, address, National Provider Identifier (NPI), and State License number) of physician attendees who receive complimentary food and beverage in conjunction with a CME activity. The commercial supporter is required to submit the collected data to the Centers for Medicare and Medicaid Services which will then publish the data on its website.

The Johns Hopkins School of Medicine takes responsibility for the content, quality and scientific integrity of this CME activity.



REGISTRATION

Thursday, September 5, 2024 - 7:30-8:00 a.m.
Friday, September 6, 2024 - 6:50 to 7:20 a.m.

LOCATION

Johns Hopkins School of Medicine
Thomas B. Turner Building
720 Rutland Avenue, Ground Floor
Baltimore, Maryland 21205

The Turner Building is located on Rutland Avenue at Monument Street. Directions and campus parking information are available on our website under the Contact Us tab at <https://HopkinsCME.cloud-cme.com>. Handicapped parking is available in the nearby Rutland Garage. Johns Hopkins is smoke-free.

HOTEL ACCOMMODATIONS

A limited block of sleeping rooms has been reserved at the hotel for your convenience and will be available on a first come, first served basis.

Residence Inn Baltimore At the Johns Hopkins Medical Campus

Tel: +1 (443) 524-8400
Address: 800 North Wolfe Street, Baltimore, MD 21205
Website: www.marriott.com [Click Here to Book](#)
Hotel reservation cut-off date: 08/15/2024

The Residence Inn Baltimore is located on the Johns Hopkins Medical Campus. Make your reservation by calling the hotel directly and specify that you are attending the Johns Hopkins HITEC Conference to receive the special group rate of \$155 for one bedroom king suite, plus tax. On-site valet parking is available at the hotel at an additional charge. Check-in time is 4:00 p.m. Check-out time is 12:00 p.m. This hotel is located directly across the street to the meeting site, within walking distance.

TRAVEL INFORMATION

By Air: Baltimore is served by three major airports: Baltimore/Washington International Airport (BWI) in Maryland; Washington Dulles International Airport (IAD) and Ronald Reagan National Airport (DCA) in Northern Virginia.

Taxi Service: To downtown Baltimore from BWI, the nearest airport, is 15-30 minutes depending on traffic and approximately \$50 one way. Super Shuttle charges less than \$20 one way and reservations are needed. Reservations can be made online at: www.supershuttle.com or call +1 (410) 859-3427.

By Rail: Baltimore is easily accessible by train. Amtrak trains run 24 hours a day, 7 days a week. Baltimore is a major stop for Amtrak's high-speed Acela Express service. Penn Station is easily accessible by I-95, I-83 and I-70 and is a 15 minute taxi ride to Johns Hopkins. For more information visit www.amtrak.com or call +1 (800) USA-RAIL.

Ground Transportation

You can request a ride on any day and at any time with Uber or Lyft in Baltimore.



SYLLABUS

The syllabus will be accessible online and via your mobile device in the CloudCME APP prior to the activity. An email will be provided once available.

VIRTUAL LEARNERS

The zoom webinar link will be accessible online and via your mobile device in the CloudCME App one week prior to the activity start date. An email reminder will also be sent.

To access, please visit our website.

CME Website: <https://hopkinscme.cloud-cme.com> (Sign In, Click My CME tab, Click Syllabus)

FEES:

	Early Bird by August 1, 2024	After August 1, 2024
In Person		
Physicians in Person Course Only	\$250	\$300
Physician in Person Course with Hands On	\$400	\$450
Physician in Training/Non-Physician Health Professional In Person Course Only	\$100	\$150
Physician in Training/ Non-Physician Health Professional In Person Course with Hands On	\$200	\$250
Nursing Track in Person with Hands On	\$100	\$150
Industry Partners	\$200	\$250
Virtual		
Virtual Attendees (Thursday and Friday Lectures and Live Demonstrations only, does not include hands-on participation.)	FREE	FREE

The registration fee includes instructional materials, continental breakfasts, refreshment breaks and lunches.

LATE FEE AND REFUND POLICY

A \$50 late fee applies to registrations received after 5:00 p.m. ET on August 30, 2024. A handling fee of \$50 will be deducted for cancellation. Refund requests must be received by fax or mail by August 30, 2024. No refunds will be made thereafter. Transfer of registration to another Johns Hopkins activity in lieu of cancellation is not possible.

Method of Payment: Learners must register and submit full payment in advance for the in-person and hands-on sessions. Virtual attendance is complimentary and for the didactic and live endoscopy session only. On-site payments can only be accepted if made by learners via credit card online portal by 5:00 p.m. ET on September 5, 2024.

You will receive a confirmation by e-mail. If you have not received it by August 30, 2024, call (410) 502-9636 to confirm that you are registered. A transcript of attendance will be available upon attestation of your credit hours and submission of the post activity online evaluation.

The Johns Hopkins University reserves the right to cancel or postpone any activity due to unforeseen circumstances. In this event, the University will refund the registration fee but is not responsible for travel expenses. Additionally, we reserve the right to change the venue to a comparable venue. Under such circumstances registrants will be notified as soon as possible.



ACTIVITY DIRECTORS

HITEC
2024



Mouen Khashab, MD, MASGE

Professor of Medicine
Director, Therapeutic Endoscopy
The Johns Hopkins Hospital
Lead, Therapeutic Endoscopy Group
The Johns Hopkins Enterprise
Division of Gastroenterology and Hepatology
Johns Hopkins University School of Medicine
Baltimore, Maryland



Saowanee Ngamruengphong, MD

Associate Professor of Medicine
Associate Director, Gastroenterology and
Hepatology Fellowship
Division of Gastroenterology and Hepatology
Johns Hopkins University School of Medicine
Baltimore, Maryland



Mary-Rose Hess, BSN, RN, CGRN

Endoscopy Nurse Manager
Advanced Therapeutic Nurse
The Johns Hopkins Hospital

JOHN HOPKINS SPEAKERS



Venkata Akshintala, MD

Assistant Professor of Medicine
Program Director, Medical Pancreatology
Program Director,
Therapeutic Endoscopy Fellowship



Eun Ji Shin MD, PhD

Associate Professor of Medicine



Marcia Canto, MD, MSH

Professor of Medicine and Oncology
Director, Clinical Research and Heartburn Center



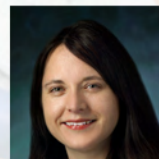
Olaya Brewer Gutierrez, MBBS

Assistant Professor of Medicine



Zahra Maleki, MD, FCAP, MIAC

Associate Professor of Pathology



Margaret Geri Keane, MBBS, MSc

Assistant Professor of Medicine



Vikesh Singh, MD, MSc

Professor of Medicine
Director of Endoscopy
Director of Pancreatology





Torsten Beyna, MD (Germany)
Head of Department of Gastroenterology and interventional
Department of Gastroenterology, Evangelisches Krankenhaus Dusseldorf, Dusseldorf, Nordrhein-Westfalen, Germany



Horst Neuhaus, MD, PhD (Germany)
Professor of Medicine
Technical University Munich
Consultant Gastroenterologist and Interventional Endoscopist
Interdisciplinary Clinic
Düsseldorf, Germany



Kenneth Binmoeller, MD, FACC, MASGE (USA)
Chief, Division of Advanced Interventional Endoscopy
Advanced Organ Therapy Service Line
Medical Director, Interventional Endoscopy Services
San Francisco, California (USA)



Nonthalee Pausawasdi, MD (Thailand)
President, Thai Association for Gastrointestinal Endoscopy (TAGE)
Associate Professor of Medicine
Division of Gastroenterology, Department of Internal Medicine
Faculty of Medicine Siriraj Hospital, Mahidol University
Bangkok, Thailand



Pierre H. Deprez, MD, PhD (Belgium)
Professor of Gastroenterology
Department of Hepatogastroenterology, Cliniques Universitaires Saint-Luc, Université Catholique de Louvain, Brussels, Belgium



Douglas Pleskow, MD, FASGE, AGAF, FACC (USA)
Professor of Medicine
Associate Chief, Division of Gastroenterology
Harvard Medical School
Beth Israel Deaconess Medical Center
Boston, MA (USA)



Vinay Kumar Dhir, MD, DNB, FASGE, FAIGE (India)
Chairman
Institute of Digestive and Liver Care, SL Raheja Hospital
Mumbai, India



Alessandro Repici, MD (Italy)
Professor of Gastroenterology, Director of Endoscopy
Humanitas Research Hospital & Humanitas University
Milan, Italy



Cesare Hassan, MD (Italy)
Professor of Medicine. Endoscopy Unit
IRCCS Humanitas Clinical and Research Center
Milan, Italy



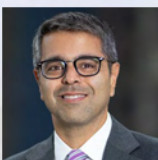
Doug Rex, MD, MASGE (USA)
Distinguished Professor Emeritus of Medicine
Indiana University School of Medicine
Indianapolis, Indiana (USA)



Pichamol Jirapinyo, MD, MPH (USA)
Director of Bariatric Endoscopy Fellowship
Brigham and Women's Hospital
Assistant Professor of Medicine
Harvard Medical School
Boston, Massachusetts (USA)



Carlos Robles-Medranda, MD (Ecuador)
Head of the Endoscopy Division
Ecuadorian Institute of Digestive Diseases (IECED)
Guayaquil, Ecuador



Rajesh N. Keswani MD MS (USA)
Director of Endoscopy
Northwestern Memorial Hospital
Director of Quality
Northwestern Medicine Digestive Health Center
Associate Professor of Medicine
Northwestern University Feinberg School of Medicine
Chicago, Illinois (USA)



Thomas Rösch, MD (Germany)
Professor of Internal Medicine and Gastroenterology
Director, Department of Interdisciplinary Endoscopy,
University Hospital Eppendorf
Hamburg, Germany





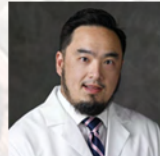
Christopher Thompson, MD, MSc, FASGE, FACP, AGAF, FJGES (USA)
Director of Endoscopy, Brigham and Women's Hospital
Professor of Medicine, Harvard Medical School
Boston, Massachusetts (USA)



Jeanin E. van Hooft, MD, PhD, MBA (Netherlands)
Professor of Gastroenterology and Hepatology
Chair Department of Gastroenterology & Hepatology
Leiden University Medical Center
Leiden, The Netherlands



Amy Tyberg, MD, FASGE, FACP (USA)
Associate Chief of Advanced and Therapeutic Endoscopy
Program Director, Advanced Endoscopy Fellowship
Hackensack Meridian Health
Hackensack University Medical Center
Jersey Shore University Medical Center
Neptune Township, New Jersey (USA)



Dennis Yang, MD (USA)
Director of Third Space Endoscopy at the Center for Interventional Endoscopy at AdventHealth Orlando
Orlando, Florida (USA)



Linda Zhang, MD (Australia)
Staff Specialist Division of Gastroenterology & Hepatology St. George Hospital
Sydney, Australia



Thursday, September 5, 2024

7:30-8:00 a.m. **Registration and Breakfast**

8:00-8:10 a.m. **Welcome, Introduction and Conference Goals**

Moderators:

8:10-8:35 a.m. **Symposium # 1**
This session is not eligible for AMA PRA Category 1 Credits.

8:35-9:00 a.m. **Symposium # 2**
This session is not eligible for AMA PRA Category 1 Credits.

9:00-10:45 a.m. **Live Endoscopy Session 1**

- **Room 1:** Milan, Italy: Alessandro Repici, MD
- **Room 2:** Dusseldorf, Germany: Torsten Beyna, MD
- **Room 3:** Hamburg, Germany: Thomas Rösch, MD
- **Room 4:** Milan, Italy: Alessandro Repici, MD

10:45-11:10 a.m. **Break and Visit Exhibits**

11:10-11:35 a.m. **Symposium # 3**
This session is not eligible for AMA PRA Category 1 Credits.

11:35-12:00 p.m. **Symposium # 4**
This session is not eligible for AMA PRA Category 1 Credits.

12:00-1:00 p.m. **Lunch (includes lunch symposium)**
This session is not eligible for AMA PRA Category 1 Credits.

12:15-12:40 p.m. **Symposium # 5**
This session is not eligible for AMA PRA Category 1 Credits.

1:00-5:00 p.m. **Hands-on Course**

Lab A: 1-5 pm

Station # 1: ESD 1
(Faculty trainers: Yang, Ngam)

Station # 2: ESD 2
(Faculty trainers: Zhang, Ngam)

Station # 3: POEM 1
(Faculty trainers: Neuhaus, Khashab)

Station # 4: POEM 2
(Faculty trainers: Tyberg, Khashab)

Station # 5: Defect closure and suturing
(Faculty trainers: Brewer, Zhang, Akshintala)

Station # 6: New Technology

Lab B: 1-5 p.m.

Station # 1: Defect closure and suturing 1
(Faculty trainers: Keswani, Keane)

Station # 2: Defect closure and suturing 2
(Faculty trainers: Jirapinyo, Keane)

Station # 3: EMR and hemostasis
(Faculty trainers: Shin, Hassan)

Station # 4: Interventional EUS 1
(Faculty trainers: Deprez, van Hooft)

Station # 5: Interventional EUS 2
(Faculty trainers: Pleskow, van Hooft)

Station # 6: New Technology



Friday, September 6, 2024

6:50-7:20 a.m. **Registration and Breakfast**

7:20-7:30 a.m. **Welcome and Introduction**

7:30-7:50 a.m. **Symposium # 6**
This session is not eligible for AMA PRA Category 1 Credits.

7:50-8:10 a.m. **Symposium # 7**
This session is not eligible for AMA PRA Category 1 Credits.

8:10-9:40 a.m. **Live Endoscopy Session One**

- **Room 1:** Johns Hopkins Hospital
- **Room 2:** Mumbai, India: Vinay Dhir, MD, DNB, FASGE, FJGES, FSGEI
- **Room 3:** Bangkok, Thailand: Nonthalee Pausawasdi, MD
- **Room 4:** Mumbai, India: Vinay Dhir, MD, DNB, FASGE, FJGES, FSGEI

9:40-10:10 a.m. **Break and Visit Exhibits**

10:10-10:30 a.m. **Symposium # 8**
This session is not eligible for AMA PRA Category 1 Credits.

10:30-12:00 p.m. **Live Endoscopy Session Two**

- **Room 1:** The Johns Hopkins Hospital
- **Room 2:** The Johns Hopkins Hospital
- **Room 3:** Brigham and Women's Hospital: Christopher Thompson, MD, MSc, FASGE, FACG, AGAF, FJGES
- **Room 4:** Guayaquil, Ecuador: Carlos Robles-Medrande, MD

12:00-12:30 p.m. **Break and Visit Exhibits**

12:30-1:10 p.m. **Lunch (includes lunch symposium)**
This session is not eligible for AMA PRA Category 1 Credits.

12:30-12:50 p.m. **Symposium # 9**
This session is not eligible for AMA PRA Category 1 Credits.

12:50-1:10 p.m. **Symposium # 10**
This session is not eligible for AMA PRA Category 1 Credits.

1:10-1:35 p.m. **Break and Visit Exhibits**

1:35-3:15 p.m. **Live Endoscopy Session Three**

- **Room 1:** The Johns Hopkins Hospital
- **Room 2:** The Johns Hopkins Hospital
- **Room 3:** San Francisco, California: Kenneth Binmoeller, MD, FACG, MASGE
- **Room 4:** Indiana University: Doug Rex, MD, MASGE

3:15-3:30 p.m. **Break and Visit Exhibits**

3:30-5:00 p.m. **Live Endoscopy Session Four**

- **Room 1:** The Johns Hopkins Hospital
- **Room 2:** The Johns Hopkins Hospital
- **Room 3:** Indiana University: Doug Rex, MD, MASGE
- **Room 4:** San Francisco, California: Kenneth Binmoeller, MD

5:00-5:05 p.m. **Closing Remarks**
Mouen Khashab, MD and Saowanee Ngamruengphong, MD

Adjourn

You will receive an email notification to complete the evaluation form and to attest to the number of hours in attendance. The registration desk will remain open during conference hours.

Thursday, September 5, 2024

NURSING TRACK GUEST SPEAKERS



Eileen Daus, BSN, RN, CGRN, CFER, CER
SGNA President 2023-2024
Endoscopy Clinical Nurse Manager
Sentara Virginia Beach General Hospital
Virginia Beach, Virginia



Catherine Bauer RNBS, MSN, MBA, CGRN
SGNA President 2019-2020
Ambulatory Director for Digestive Health at
UVA Health
SGNA Greater North Carolina Regional
President
Charlottesville, Virginia

COURSE OBJECTIVES

After attending this activity, the learner will demonstrate the ability to:

- Enhance preparedness with best practices to establish a comprehensive clinical education program designed to seamlessly integrate new products and procedures into their endoscopy practice.
- Acquire needed skills to apply quality improvement project methods tailored to meet the utilization and workflow goals of their endoscopy center.
- Develop the ability to create a variety of resources and educational pathways, tailored to address the individualized learning needs of advanced therapeutic endoscopy staff.
- Gain proficiency in providing examples of advanced endoscopic procedures, and they will be able to identify the specific equipment and accessories associated with each procedure.
- Master techniques in formulating strategies for preserving clinical competencies, creating a supportive learning environment that enhances staff confidence, and ultimately enhances overall performance.



Thursday, September 5, 2024

7:30-8:00 a.m.

Registration and Breakfast

8:00-8:10 a.m.

Welcome and Introductions

Ahmed El-Agamy, MB Bch, MBA, Endoscopy Operations Manager, Laurie McClelland, BSN, RN, CGRN and Cathy Garrett, BSN, RN, CGRN

8:10-8:30 a.m.

SESSION 1

How to Safely Introduce New Products and Procedures into your Practice

Mary-Rose Hess, BSN, RN, CGRN Endoscopy Nurse Manager

8:30-8:50 a.m.

How to Improve your Workflow and Utilization: Every Minute Counts

Shanshan Huang, MBA, Business Analytics & Clinical Data Program Manager

8:50-9:10 a.m.

Removal of Lesions by ESD, EFTR and STER Procedures

Rosa Fusco, BSN, RN, CGRN and Sarah Ashwood, BSN, RN

9:10-9:35 a.m.

Procedures for Patients with Altered Upper GI Anatomy

Brittany Craven BSN, RN and Edward Johnston MAS, BSN, RN, NHDP-BC

9:35-9:45 a.m.

Break

9:45-9:50 a.m.

SESSION 2

Station Introductions

Libbie Monroe, BSN, RN, CGRN, and Aneesha Linder, MSN, RN

9:50-11:50 a.m.

Hands-on Stations

Note: Participants will rotate between stations every 30 minutes

9:50-10:20 a.m.

Station 1: Endoscopic Suturing

Sarah Ashwood, BSN, RN, Kaitlin Mickens, Clinical Technician, Tanya Valdez, BSN, RN and Nilda Texidor-Murray, RN

10:20-10:50 a.m.

Station 2: Stop the Bleed

Brittany Craven, BSN, RN and Marcy Brewer, BSN, RN
Qurat-ul-ain Zafar (Anna), BSN, RN and Tyree McAllister, Clinical Technician

10:50-11:20 a.m.

Station 3: Full Thickness Resection Device

Rose Fusco, BSN, RN, CGRN, Linda Hyland, BS, RN, Gretchen Bracey, Clinical Technician and Caroline French, BSN, RN

11:20-11:50 a.m.

Station 4: Name that Stent

Sophia Paraiso, BSN, RN, Shaquana Arnwine, Clinical Technician, Morgan Morela, BSN, RN and Shamarla Bates, Clinical Technician

11:50-12:00 p.m.

Question and Answer Session

Libbie Monroe, BSN, RN, CGRN, and Aneesha Linder, MSN, RN

12:00-1:00 p.m.

Lunch

1:00-1:10 p.m.

SESSION 3

Lecture Introductions

Laurie McClelland, BSN, RN, CGRN
and Cathy Garrett, BSN, RN, CGRN

1:10-1:30 p.m.

Current Treatment Options for Barrett's Esophagus

Hilary Cosby, BSN, RN, CGRN, Senior Research Nurse Coordinator and Marcy Brewer, BSN, RN

1:30-1:50 p.m.

Esophageal Motility: Use in Therapeutics

Lily Balousek, BSN, RN
and Samantha Gilson (Sam), BSN, RN

1:50-2:20 p.m.

POEM's, Different Versions of Peri Oral Endoscopic Myotomy

Tanya Valdez, BSN, RN and Sophia Paraiso, BSN, RN



Thursday, September 5, 2024 (continued)

2:20-2:50 p.m.

SGNA and CGRN: The Scope and Relevance Towards Professionalism

SGNA National President and SGNA Greater North Carolina Regional President

Eileen Dauz, BSN, RN, CGRN, CFER, CER

SGNA National President

and Catherine Bauer, MSN, MBA, CGRN

SGNA Greater North Carolina Regional President

**Society of Gastroenterology Nurses and Associates (SGNA)*

and American Board of Certification for Gastroenterology Nurses (CGRN)

2:50-2:55 p.m.

Break

2:50-2:55 p.m.

SESSION 4

Station Introductions

Libbie Monroe, BSN, RN, CGRN, and Aneesha Linder, MSN, RN

3:00-5:00 p.m.

Hands-on Stations

Note: Participants will rotate between stations every 30 minutes

3:00-3:30 p.m.

Station 1: Hybrid Argon Plasma Coagulation

Kimberly Earnest, RN, Nicole Caldwell, Clinical Technician,

Morgan Morela, BSN, RN, and Meghan Moran, Clinical Technician

3:30-4:00 p.m.

Station 2: Halo Thermal Therapy

Danielle Aluisi, BSN, RN, Monique Johnson, Clinical Technician,

Christina Wendel, BSN, RN and Dicheaker Lilly (Dottie), Clinical Technician

4:00-4:30 p.m.

Station 3: Endo Flip

Shannon Kelly, BSN, RN, Sebastian Melendez, RN and Jared

McIlvene, BSN, RN and Jessica Bachman, BSN, RN

4:30-5:00 p.m.

Station 4: POEM Instruments

Edward Johnston, MAS, BSN, RN, Zachary Peterson, BSN, RN,

Sophia Paraiso, BSN, RN and Camille Tinnin Clinical Technician

5:00-5:10 p.m.

Closing Statements with Questions and Answers

Mary Rose Hess, BSN, RN, CGRN

Optional

5:10-5:30 p.m.

"Take a Stroll Through Transverse Alley"

Meet the Nursing Leadership Education Team:

Emergent Call Cart: Sarah Ashwood, BSN, RN, and Christina Wendel, BSN, RN

Education Tower: Linda Hyland, BS, RN and Rosa Fusco BSN, RN CGRN

Nurse Physician Procedure Group: Marcy Brewer, BSN, RN and Morgan Morela, BSN, RN

Data Analysis Board: Ahmed El-Agamy, MB Bch, MBA, Endoscopy Operations Manager

Standard of Care: Edward Johnston, MAS, BSN, RN, NHDP-BC and Tanya Valdez, BSN, RN

Pulmonary Corner: Caroline French, BSN, RN

Advanced Therapeutic Nursing Track

Friday, September 6 2024

Attendees of the Advanced Therapeutic Nursing Track continues with optional attendance to HITEC Main Lectures and Live Demonstrations Friday, September 6. See full agenda for details on page 10.

